

A concrete dam 12 metres high and 100 metres wide in the heart of Brownhill Creek Recreation Park?



PUBLIC MEETING

Wednesday 26 October 7pm
Mitcham Village Uniting Church
101 Princes Rd (by Mitcham Institute)

- Come and hear some community perspectives on the proposals
- Contribute your views and help plan/ implement community advocacy

Make the authorities listen to community concerns.

In 2006 consultants Hydro Tasmania proposed two concrete dams *next door* to Brownhill Creek Recreation Park, but the community expressed grave concerns about heritage & environmental impacts. Now consultants Worley Parsons are proposing a dam *right in the Park!*

Damaging one of the world's oldest parks.

Governor Grey set aside Brownhill Creek for public purposes in 1841, predating the oldest National Parks in the world at Yellowstone USA (1872), Royal National Park NSW (1879) and Belair SA (1891).

Brownhill Creek was proclaimed a National Pleasure Resort in 1915 and is now part of Yurrebilla, The Greater Mount Lofty Parkland.

For 15 years volunteers, including Friends of Brownhill Creek, local service and school groups, have been working to restore the Park to its former glory. This proposal will destroy that work and enthusiasm.

Environmental, Heritage and Recreational Impacts

- The Park Management Plan designates the area as a *heritage site* for restoration, interpretation or safety works only.

- The proposed dam site is at "Seven Pines," a popular creek-side picnic area under heritage Stone Pines, believed to have been planted for Federation in 1901. One of these is on a National Register.
- The dam and road relocation will destroy the heart of the park, which contains a traditional Kurna camping site, a colonial heritage rock-crushing site, an important plant rehabilitation site and endangered wildlife.
- The Kurna people called this area Wirraparinga (place of scrub and creek) and the walking trail constructed in their honour will be blocked.
- The park provides a rural landscape less than 10km from the city centre, a special place to retreat to for peace and exercise.
- Activities in the park include picnicking, walking, running, cycling, mountain-bike riding, horse riding and artistic pursuits such as painting and photography. Senior citizens, school, historical, and tourist groups also use the park.

Dam construction: further impacts

- Construction over 1-2 years will involve bringing in up to 100,000 tonnes of material in 20-30tonne trucks (*up to 5,000 truck movements or one every 20 minutes*) with a possible new ford across the creek where *The Body Shop*

volunteers and others have been revegetating for over 5 years.

- ☒ A Cofferdam, upstream from the main dam, will be built to protect the dam site during construction. This will cause more destruction to the Park.



Dam in Cobblers Creek Recreation Park

Questionable cost benefit analysis

- ☒ The dam is a small part of a \$133M flood mitigation project to protect housing built on flood-prone land in mostly Unley and West Torrens.
- ☒ The 1 in 100 year flood planned for *has never been recorded in 175 years of European settlement*, with sparse and unreliable data used in planning.
- ☒ The dam will not give any protection in the event of short intense rainfall in suburban areas causing flooding.
- ☒ The cost of the project at \$133m is 50% more than the economic benefits it will

provide. Omitting the dam would save more than \$10 million dollars of taxpayer's/ ratepayer's money.

- ☒ The benefit to cost calculations have not taken into account the destruction of thousands of hours of works done in rehabilitating the park, or other public costs to tourism, recreational use and the environment of the park.

Other options are available

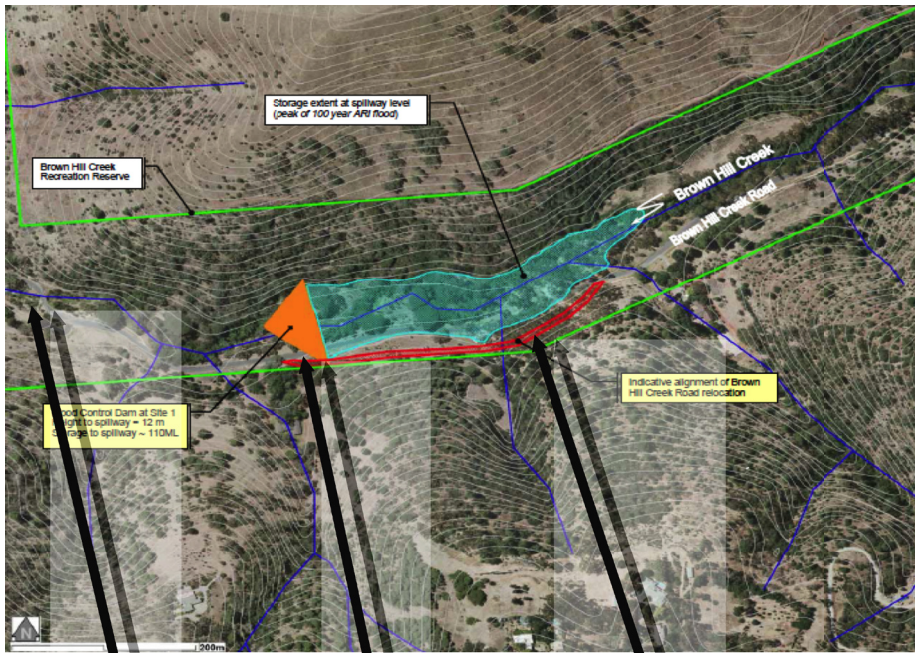
- ☒ More channel improvements/diversions and other suburban works such as small detention basins and embankments could remove the need for any dam.
- ☒ Revegetation of cleared rural parts of the catchment can reduce run-off by up to 20%.
- ☒ Channel clearing in urban areas, incorporating new data from a creek survey by the NRM authority, will reduce flooding.
- ☒ Tighten planning laws to stop more building in known flood-prone areas. This will reduce the need for future flood mitigation works and reduce costs to ratepayers.
- ☒ Plan for the future and start a linear park, firstly by rehabilitating areas that are available and then through non-compulsory acquisition of flood-prone properties.



Save Brownhill Creek

A precious piece of South Australian environment and heritage must not be destroyed irrevocably for a costly dam, which might not be needed and might not work!

- ☒ *For information and support go to www.brownhillcreek.org*
- ☒ *Read the Draft Plan on the Mitcham Council website.*
- ☒ *Ring, write or email your Local Councillor, newspaper or Member of Parliament.*
- ☒ *Attend the Public Meeting on 26th October and public consultations. See the local Messenger press, or the Mitcham Council website.*
- ☒ *Sign the petition! Details for petition signing are on the website*



caravan park

dam site
at seven pines

road relocation

