

Proposed Wirraparinga Loop Trail

Wirraparinga is the Kurna name for the area; 'Forest River Place'.

Total Walking Distance
Carrick Hill Loop via Mitcham Water Works: 9.5km

1 Carrick Hill to Brown Hill Trig
Dist 1km Elevation +150m

3 Water Trough to Farm Dam
Dist 600m Elevation -130m

5 Farm Dam to Ford
Dist 1km Elevation -40m

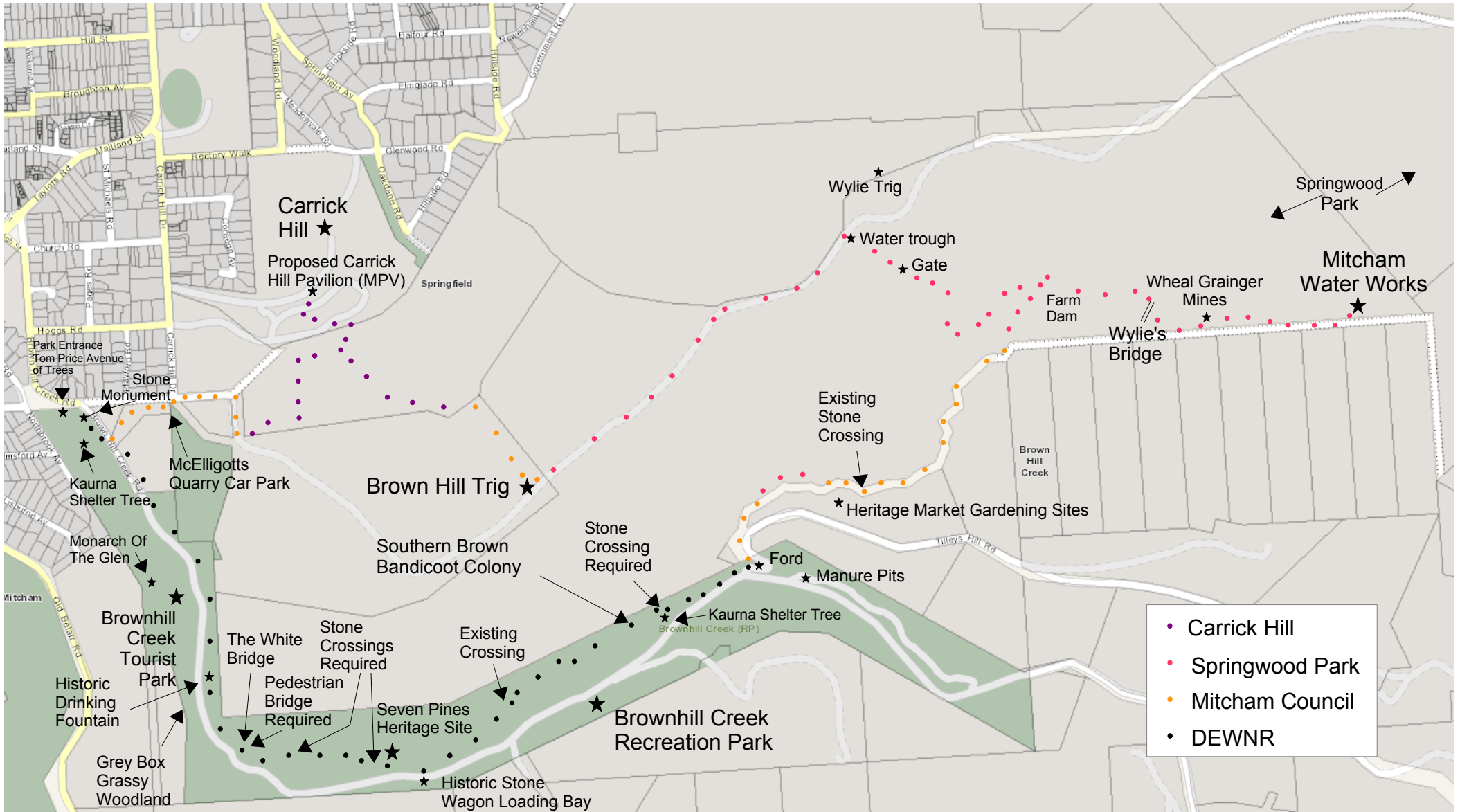
7 Park Entrance Spur
Return Dist 0.3km Elevation +0m & -0m

2 Brown Hill Trig to Water Trough
Dist 1km Elevation +15m

4 Farm Dam to Water Works Spur
Return Dist 1.9km Elevation +25m & -25m

6 Ford to McElligott's Quarry Car Park
Dist 2.4km Elevation -20m & +30m

8 McElligott's Quarry Car Park to Carrick Hill
Dist 1km Elevation +35m & -40m



Proposed Wirraparinga Loop Trail

Wirraparinga is the Kurna name for the area; 'Forest River Place'.

Total Walking Distance
Carrick Hill Loop via Mitcham Water Works: 9.5km

1 Carrick Hill to Brown Hill Trig
Dist 1km Elevation +150m

3 Water Trough to Farm Dam
Dist 600m Elevation -130m

5 Farm Dam to Ford
Dist 1km Elevation -40m

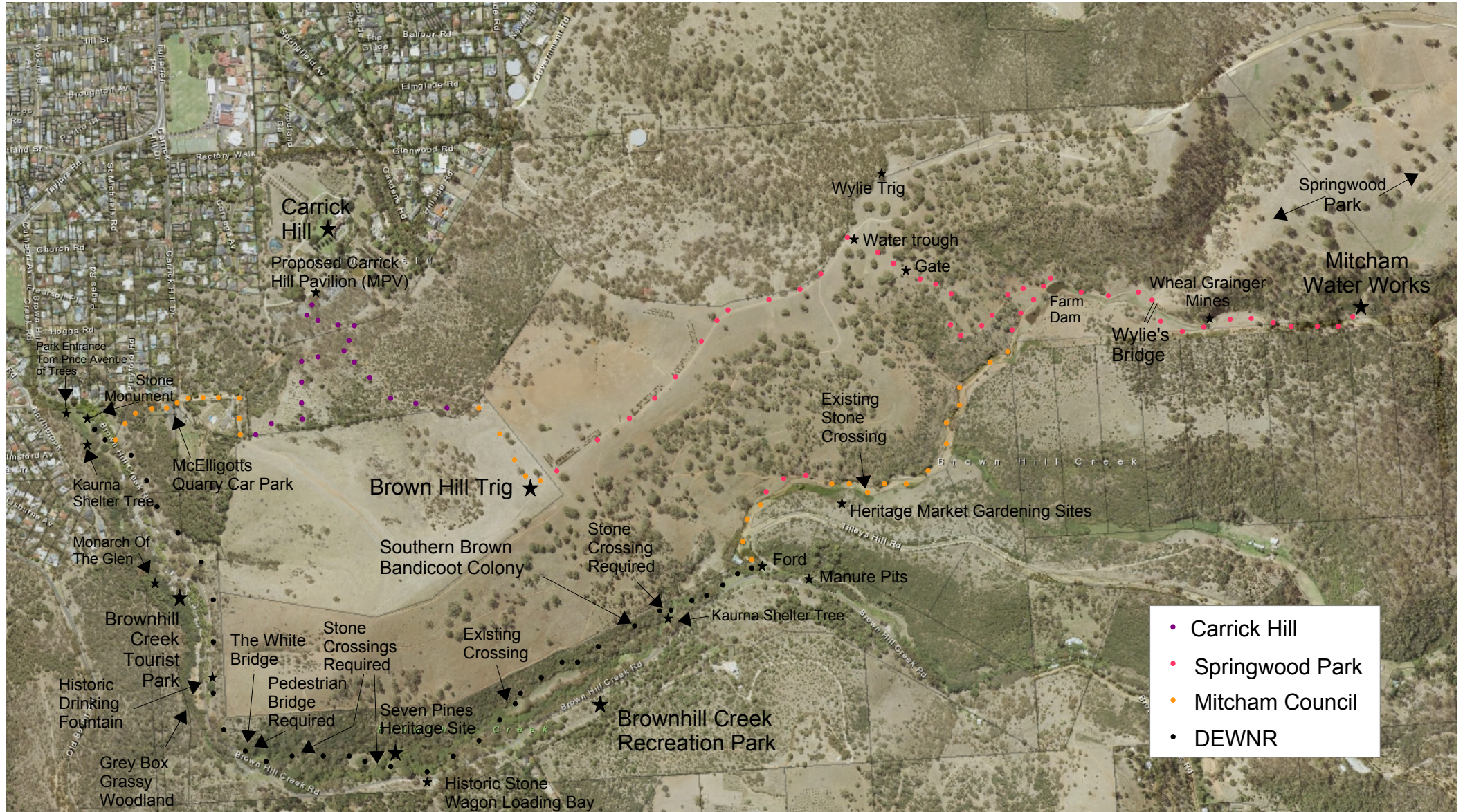
7 Park Entrance Spur
Return Dist 0.3km Elevation +0m & -0m

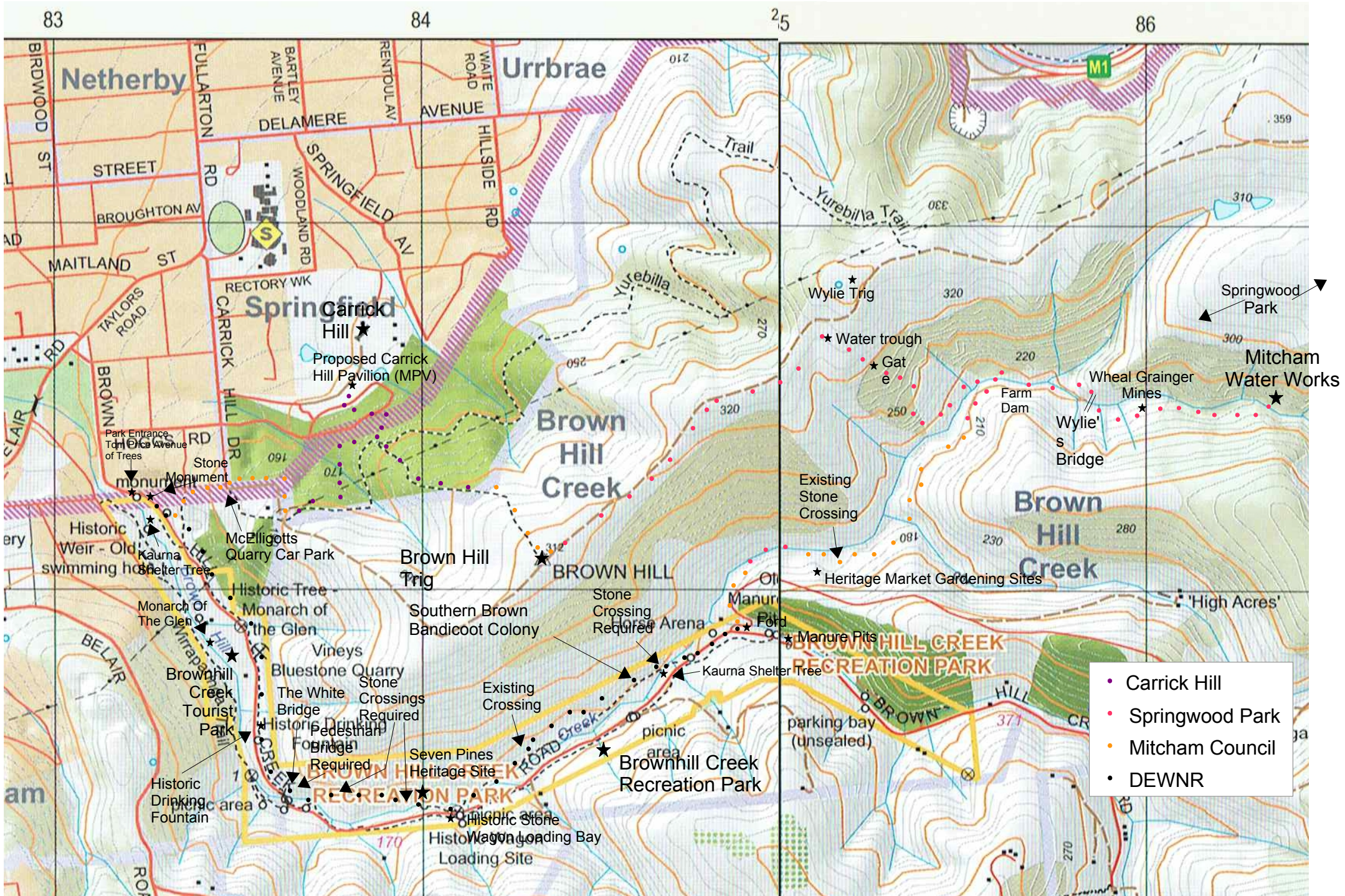
2 Brown Hill Trig to Water Trough
Dist 1km Elevation +15m

4 Farm Dam to Water Works Spur
Return Dist 1.9km Elevation +25m & -25m

6 Ford to McElligott's Quarry Car Park
Dist 2.4km Elevation -20m & +30m

8 McElligott's Quarry Car Park to Carrick Hill
Dist 1km Elevation +35m & -40m





- Carrick Hill
- Springwood Park
- Mitcham Council
- DEWNR